

# Westin Hotel National Harbor

MSE Pressure Relief Wall  
Oxon Hill, MD



**Client:** Brentwood National Harbor, LLC  
**Architect:** Fruchtmann Associates  
**Contractor:** The Whiting Turner Company  
**Structural:** KPFF Consulting  
**Geotechnical:** Schnabel  
**Scope:** Design & Build 2,200 s.f. MSE Pressure Relief Wall

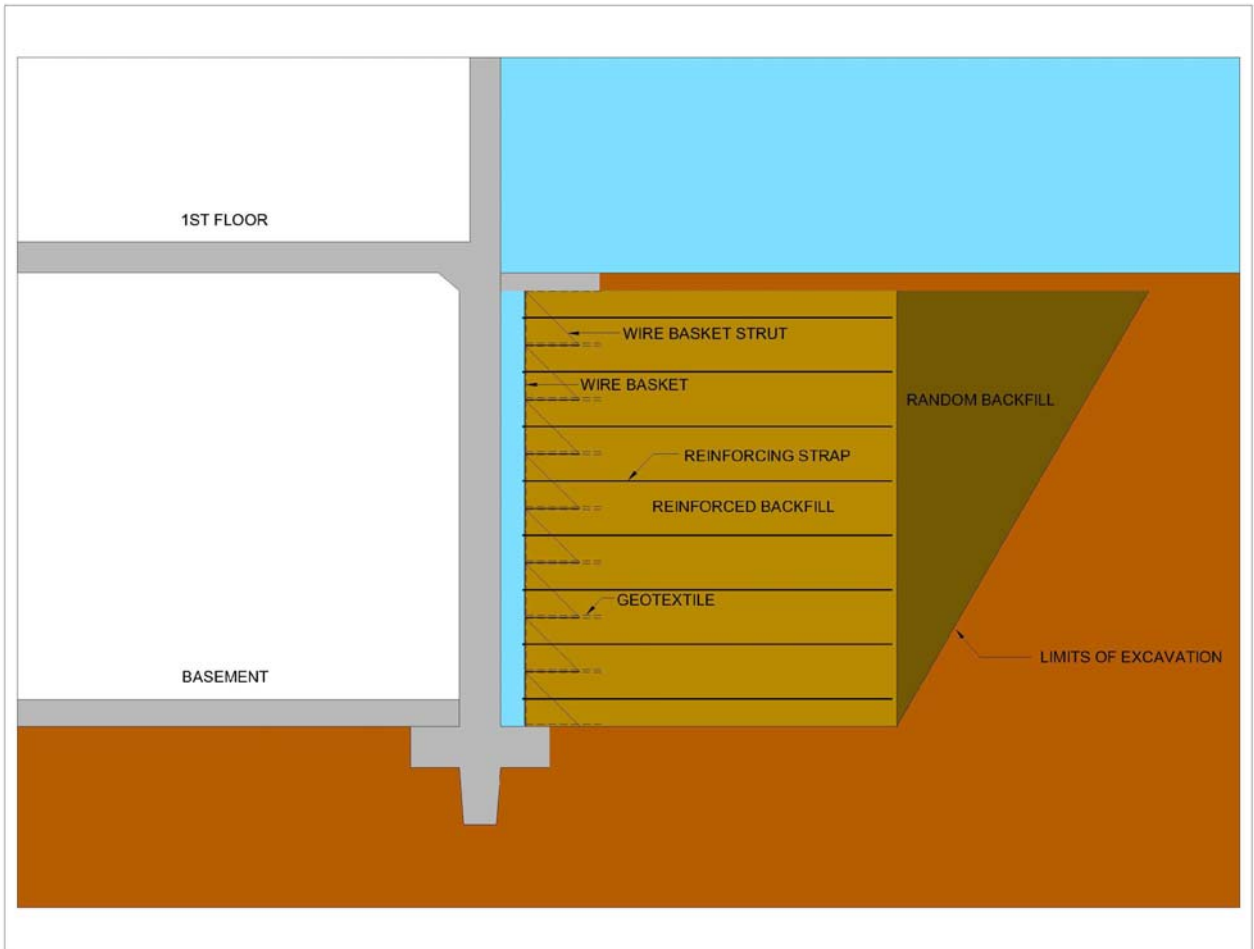
**Problem:** In November 2006, The Whiting Turner company approached GeoStructures (GSI) to develop design and build proposals for a 22 foot high pressure relief wall for their Westin Hotel project at the National Harbor in Oxon Hills, Maryland. The specified design included tiebacks with deadmen to carry the high soil loads acting on the deep basement walls. However, in several locations there was insufficient space in which to install the tie backs.

**Innovative Design:** Working in partnership with GSI, EarthTec provided an alternative pressure relief design based on its EarthTrac Wire™ MSE system. The EarthTrac™ solution incorporates galvanized wire basket facings and ribbed steel strip soil reinforcements. And the lightweight facings suited construction in confined sites like this one.



## The EarthTec Advantage:

- The project demonstrates how EarthTec's MSE pressure relief walls provide cost effective solutions for below grade structures when compared with either cantilever walls or tiebacks and deadmen.



**TYPICAL PRESSURE RELIEF WALL CROSS SECTION**



**CONNECTION DETAIL TO WIRE FACING**

Let EarthTec's innovative solutions help you save time and money on your next project. For the best MSE Walls on Earth, please contact us.

**EarthTec, Inc.**  
 107 Loudoun St. SE; Leesburg, VA 20175  
 703-771-7305 (tel)  
 703-771-7306 (fax)

[www.earthteccorp.com](http://www.earthteccorp.com)